

# Xora GPS Locator from AT&T

Simply Power on Your AT&T Phone and Start Tracking!

## Challenge

Managing a mobile workforce without real-time visibility is a bit like driving blindfolded. Productivity can suffer. Accountability is often lacking. And customers don't get the quick answers they need. There has to be a better way.

## Solution

Xora GPS Locator provides the locations of employees throughout the day, in real-time. Businesses can confirm that employees are at job sites, and also see how long they stayed. Sending the nearest worker to a job becomes a snap. The end result is more accountability and more productivity, helping your business stay ahead of the competition.

## Managing a Mobile Workforce Is a Tough Job

You're in the office, and you're responsible for managing mobile employees. Keeping tabs on what's happening in the field is a difficult task. Hourly workers are on their own, often without direct supervision; and while some are highly productive, others lack accountability. Furthermore, you have to deal with the constant barrage of incoming phone calls as field-based employees update office staff on their status, leaving them very little time for other tasks.

## Introducing a Better Way to Manage Mobile Workers

Xora GPS Locator from AT&T is a powerful yet affordable solution that provides real-time visibility into the locations and activities of your mobile workers. Because it's a 100% Web-based solution, it couldn't be easier to deploy. Workers simply carry a supported AT&T mobile phone (GPS and non-GPS devices are supported) and office staff can see where they are using any PC connected to the Internet. There's no special hardware to purchase, no software required other than a standard Web-browser, and Xora offers free world-class support.

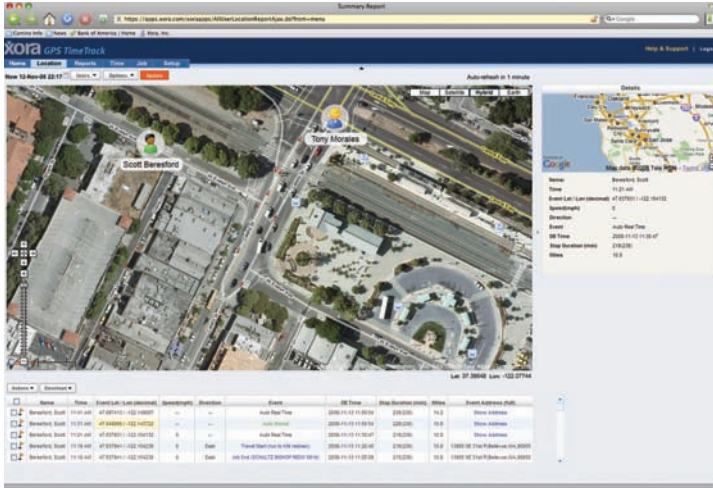
## Simple Operation

With Xora GPS Locator from AT&T, there is no software to load on the phone. Your employees simply turn on their phone, and it starts tracking.

## Xora GPS Features List

Features		Xora GPS Locator
Monthly recurring charge, per device		\$21.99
One-Time Set-Up Charge per device		\$25.00
GPS Location Tracking	Continuous GPS Location Tracking	●
	Immediate Location Request (Ping)	●
	Find Closest	●
POI Display and Management	User Defined POIs/landmarks	●
Messaging	Outbound Text Messaging (SMS)	●
	One-way messaging supported through web-interface	●
Alerts	Stop Alerts	●
Reporting	Stop Interval Reporting	●
	Breadcrumb Reports	●
	Messaging Reports	●
	'No tracking' alerts and reports	●
	Export to XLS/PDF	●
Other	Google Maps Support	●
	Group management	●
	Set Up Wizard	●
	Integrated Knowledge base Help System	●
	Support for mixed accounts with Xora Asset and Vehicle Tracker	●
	Customized Dashboard View	●





Visually locate mobile workers using a familiar mapping interface.

### GPS Location

Xora GPS Locator from AT&T shows the current and historical GPS locations\* of workers on Web-based maps and reports. Breadcrumb trails show the route that mobile workers take throughout the day.

### Rich Google™ Maps

Xora GPS Locator from AT&T uses Google Maps, complete with regular street map or satellite views. Zoom in and out using the scroll wheel on your mouse, and pan around the map by clicking and dragging. You can even find points of interest on the map simply by typing in their name.

### Landmarks

Landmarks can be created on the maps for easy viewing of customer locations, offices, distribution centers and more. You can even choose the icon you want to use to represent a landmark on the map.

### Teams and Groups

Organize mobile employees into logical Teams and Groups. Each team of users can be setup with unique landmarks and alerts, and the system can be setup so that supervisors only see data related to their teams.

### Stop Alerts and Reports

Stop alerts and reports automatically identify stop locations, making it simple to determine when and where employees stopped for a job, or for lunch. This information can be used to verify time on the job.

### Lightning-Fast ROI

Because Xora GPS Locator from AT&T is a Web-based service, it's typically up and running in just a few days; and since the up front costs are minimal, the ROI is almost immediate.

### Help When You Need It

If you run into any issues, live technicians are available to assist you on a 24/7 basis. Xora offers free support to its customers.

### Potential Benefits for Your Company

- Higher Productivity. Increased efficiency and more accountability means more jobs get done in less time
- Accurate Payroll. Location data can be compared with timesheet data for accuracy, typically leading to lower overtime payments
- Improve Customer Service. Real-time GPS locations can quickly answer customer status questions
- Resolve Customer Disputes. Visibility into worker locations can quickly prove a worker was where they were supposed to be
- Efficient Dispatching. The nearest worker to a job can quickly be dispatched
- Accurate Billing. Location data can be used to confirm time on the job, leading to more accurate customer billing and fewer billing disputes

### Notes

\*GPS locations are obtained when a GPS signal is available. If a GPS signal is not available, the phone will utilize the AT&T network using Enhanced Cell-ID or Cell-ID location technologies to determine its location. If no cell communications are available, the phone will not report a location.

**For more information contact your AT&T Representative or visit us at [www.att.com/business](http://www.att.com/business).**

### Important Information

Coverage not available in all areas. Availability, security, speed, timeliness and uninterrupted use of service are not guaranteed. Eligible wireless rate plan with compatible device required. Not all features available on all devices. Additional hardware, software, services, Internet access and/or special network connection may be required. Additional charges, terms, conditions and restrictions will apply – for complete solution details, see applicable service agreement, rate plan brochure(s), coverage maps and applicable third-party terms and conditions. Offers subject to change.